

## Friendship Groups and Outings for people over 18 with a learning disability

### EVENING ACTIVITIES Sept and Oct 2016

Please book by August 21st to assure places.

**Thursday 1st Sept 2016**

**Silent Disco**, ask us if you are not sure but promise you its FUN  
7.30pm to 10.30pm  
£30 includes entry, support staff and transport



**Thursday 8th Sept 2016**

**Top Golf**  
7.30pm to 10pm  
£35 for support staff, game and transport\*



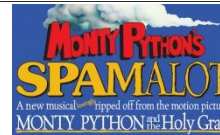
**Thursday 15th Sept 2016**

**Adele Tribute Act**  
7pm to 10.30pm  
£48 for support staff, Ticket and transport\*



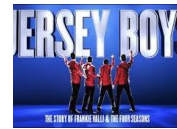
**Thursday 22nd Sept 2016**

**Spamalot**  
7.30pm to 10.30pm  
£35 for support staff, ticket and transport\*



**Thursday 29th Sept 2016**

**Pizza and Jersey Boys Tribute**  
7.30pm -10.30pm  
£45 for support staff, meal and transport\*



**Thursday 6th Oct 2016**

**Dream Boys - adult entertainment**  
7.30pm to 10.30pm  
£48 for support staff, and transport\*



**Tuesday 11th Oct 2016**

**Julian Clary , Joy of Mincing show**  
7.30pm to 10.30pm  
£48 for support staff, ticket and transport\*



**Friday 14th Oct 2016**

**Indoor Trampoline disco**  
7.30pm to 9.30pm  
£32 entry, support staff and transport



**Thursday 20th Oct 2016**

**Swan Lake, Russian State Ballet**  
7.30pm to 10.30pm  
£48 for ticket, support staff and transport



**Thursday 27th Oct 2016**

**Halloween Disco**  
7.30pm to 10.30pm  
£38 for entry, buffet support staff and transport



**Thursday 3rd Nov 2016**

**Circus of Horrors, adult themed circus freak show**  
7.30pm to 10.30pm  
£44 for ticket, support staff and transport



\* For more information on these outings please call us on

Carolyn 0776 3 120438 or Jacqui 07922 804039 or email [bookings.wedocare@gmail.com](mailto:bookings.wedocare@gmail.com)